

KWIK FILL®

Water Gun System

Model: RPKF2FS

US Patent Number 10,473,421

Keep Instructions for Future Use

SEE OUR ASSEMBLY AND OPERATION VIDEO BY VISITING WWW.KWIKFILLWATERGUN.COM
AND CLICKING ON THE SUPPORT TAB.

TABLE OF CONTENTS

Warning and Safety Instructions	1
Contents	2
Tools	2
Assembling the Fill Station	2
Connecting the Hose to the Fill Station	4
Filling the Water Gun	5
Disconnecting and Storage of Fill Station and Water Guns	5
Troubleshooting	6

WARNINGS AND SAFETY INSTRUCTIONS

Observe the following warnings and important notes to reduce injury to users and/or damage to the product.
Save these instruction for future reference.



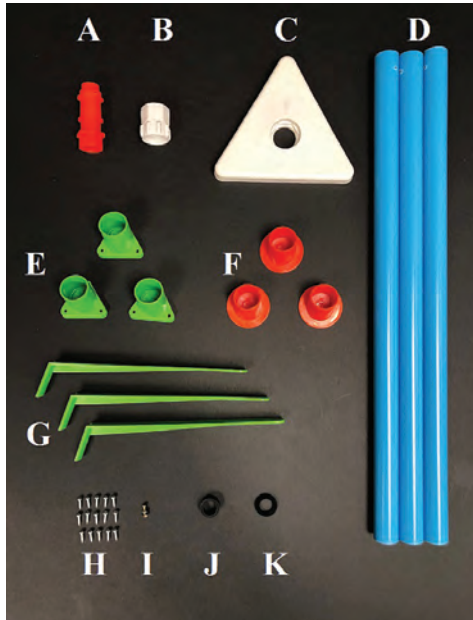
**WARNING: CHOKING HAZARD, CONTAINS SMALL PARTS.
ADULT ASSEMBLY AND SUPERVISION REQUIRED.**



IMPORTANT

- Do NOT allow children to assemble this product.
- Do NOT allow children to climb or stand on the Fill Station.
- Ensure all connections are secure before attaching water supply.
- Do NOT put foreign objects in the Fill Station Valve or water gun Nozzle.
- Water may become hot if left inside standing garden hose or water gun. Check water temperature before use. Do NOT leave full water guns in sun.
- Shut water supply OFF and RELEASE any water in the hose with an empty water gun before attempting to disconnect the garden hose from the Fill Station.
- Do NOT attempt to move the Fill Station after it is connected to the garden hose. Disconnect the garden hose prior to moving the Fill Station.
- Do NOT leave water inside water guns. Empty before storing.
- Intended for children 8 years and up
- Store inside and do NOT use if temperature is below 32°F
- Do NOT use power tools for assembly.

CONTENTS



ITEM	DESCRIPTION	QTY
A	Orange Valve	1
B	White Hose Connector	1
C	Base Plate	1
D	Blue Leg	3
E	Green Leg Support	3
F	Orange Feet	3
G	Green Cross Support	3
H	Screw	15
I	Bolt, Washer, Nut	1 set
J	Large Rubber Gasket	1
K	Small Rubber Washer	1

NOTE: 2 Kwik Fill Water Guns not shown

TOOLS

IMPORTANT: Do NOT use power tool, hand tools only.

- #2 Phillips Head Screwdriver
- Pliers/Needle Nose Pliers

ASSEMBLING THE FILL STATION

1

Place the white, triangular, Base Plate on a level surface with the smooth side down. Take a Green Leg Support and install it with the flat end under the clip in the corner of base plate (Fig 1).

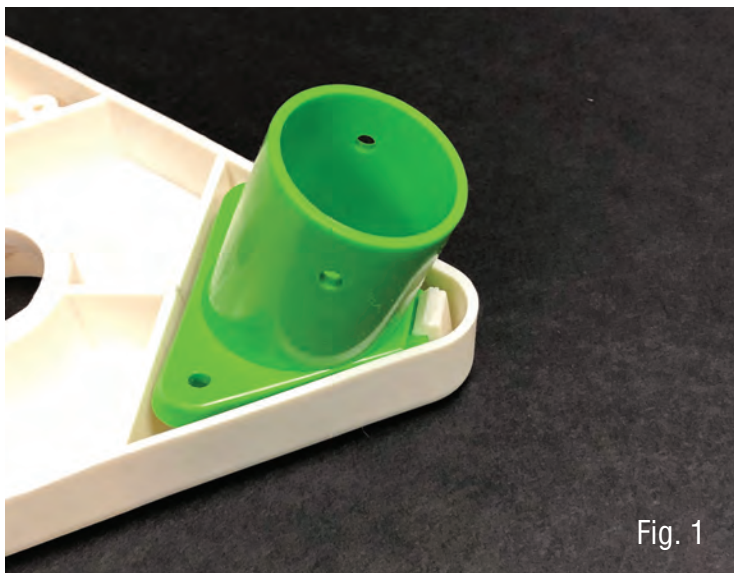


Fig. 1

2

Screw the Green Leg Support into place using (2) screws and repeat for the other two corners (Fig 2).

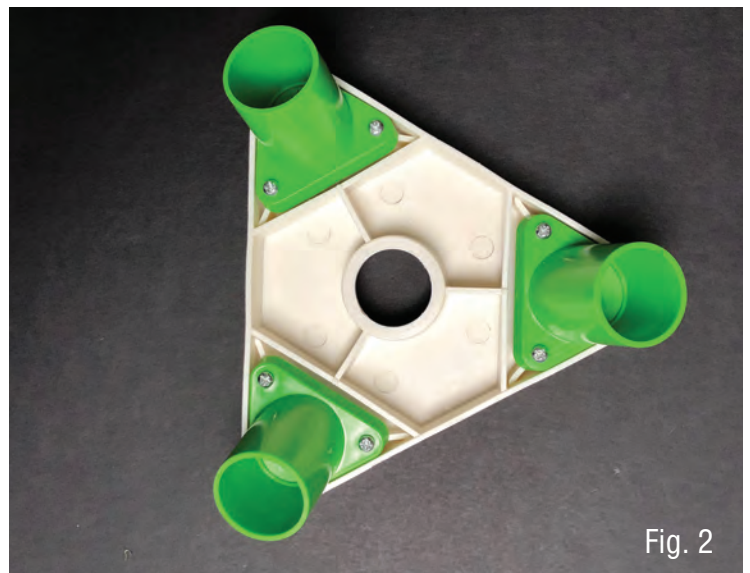
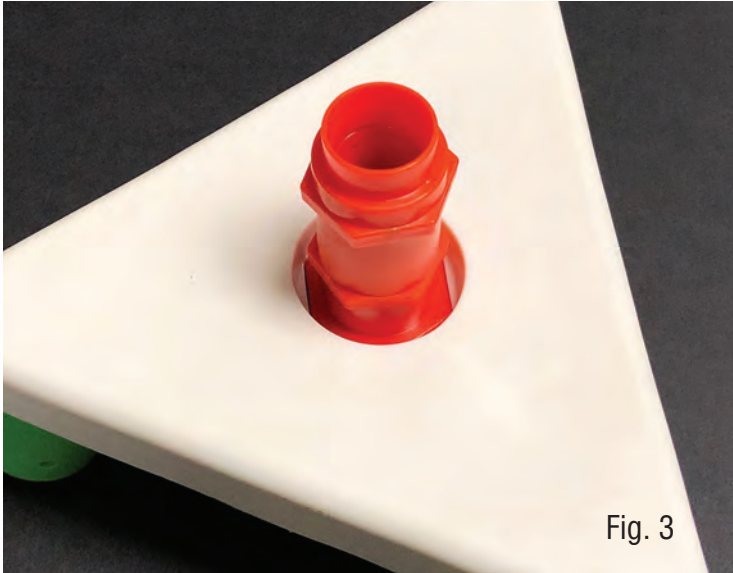


Fig. 2

3

Place the Orange Valve through the base plate and ensure it is seated properly into place (Fig 3).



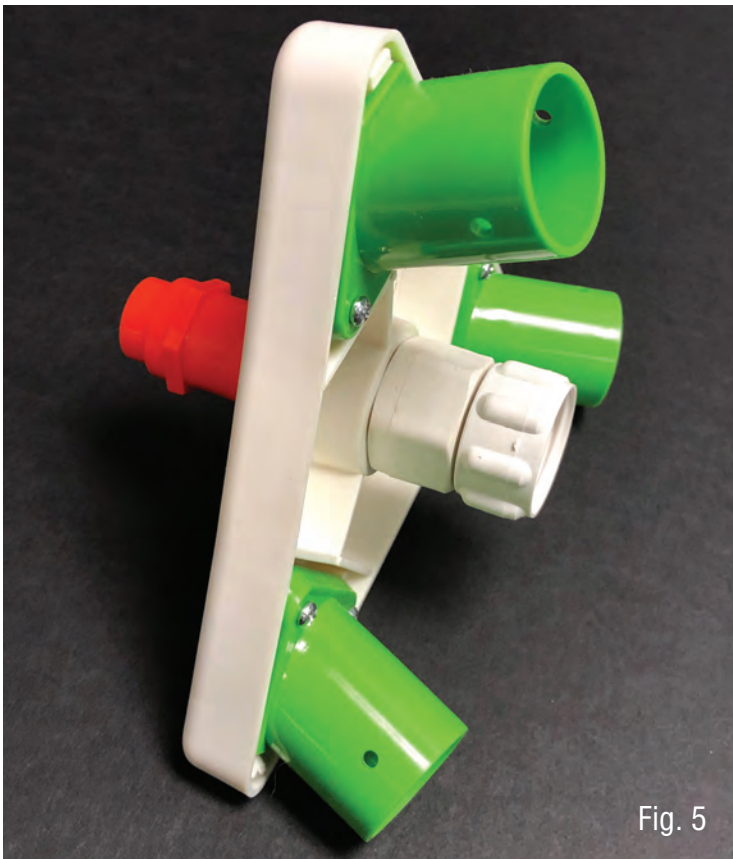
4

Place the Large Rubber Gasket into the smooth end of the white, Garden Hose Connector (Fig 4).



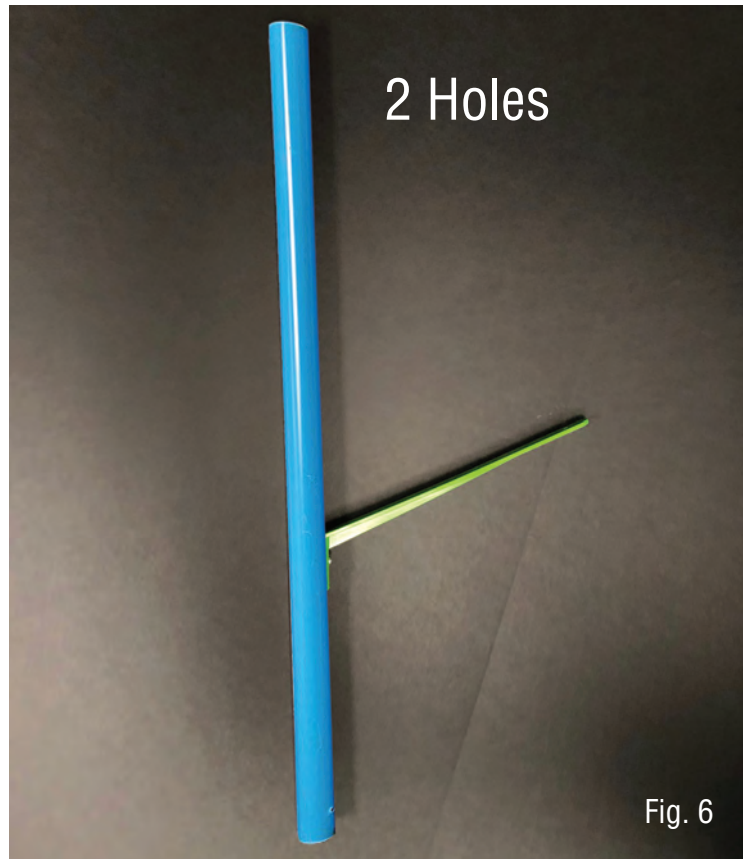
5

While holding the Orange Valve in place, screw the Garden Hose Connector to the threaded portion of the Orange Valve until the white connector is firmly against the bottom of the plate. Do Not use tool for this step, firmly hand tighten (Fig 5).



6

Secure the Green Cross Support to the Blue Legs so that the flat portion of the support is facing upward, toward the 2 holes predrilled in the top of the Blue Leg. Repeat for all 3 legs (Fig 6).



7

On a flat surface, place the Blue Legs into the Green Leg Supports attached to the Base Plate. Secure each leg with (2) screws through the predrilled holes of the Blue Legs (Fig 7). NOTE: The Green Cross Supports will face the center of the stand.

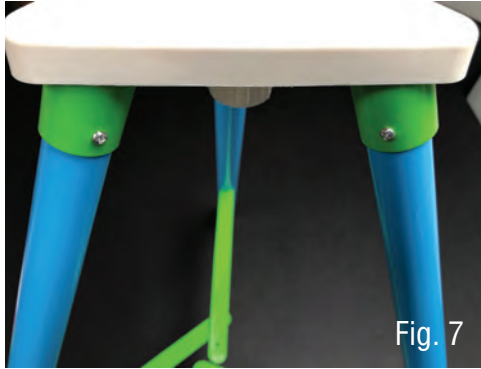


Fig. 7

8

Connect the Green Cross Supports by installing the bolt, washer and nut through all three supports (Fig 8). Use pliers/needle nose pliers to hold the nut while tightening the screw.

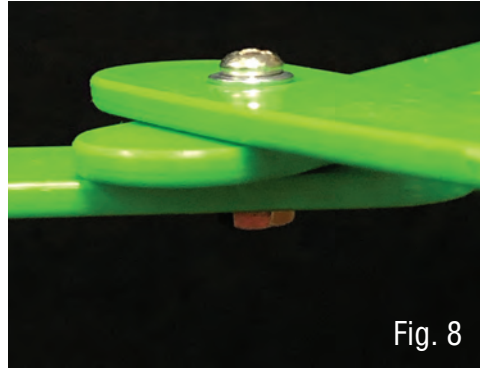


Fig. 8

9

Place the Orange Feet on the bottom of the Blue Legs and rotate until they are flat on the ground (Fig 9).



Fig. 9

CONNECTING THE HOSE TO THE FILL STATION

IMPORTANT: Place the Fill Station in its final play position/area.

IMPORTANT: Do NOT attempt to move the Fill Station once the hose is connected. If the Fill Station needs to be moved, remove the hose prior to moving the Fill Station. Do NOT pull on the Fill Station with the hose connected.

1

Install the Small Rubber Washer into the Garden Hose Connector (Fig 10).

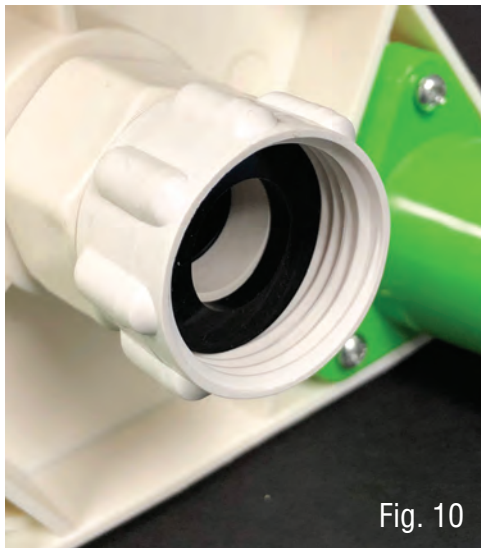


Fig. 10

2

Ensure that the Small Rubber Washer is still in place and secure the hose to the swivel end of the Hose Connector (Fig 11).

HELPFUL TIP: Place additional hose under the station to reduce any stress on the connector.



Fig. 11

3

Slowly turn the water supply to the ON position.

FILLING THE WATER GUN

1. With the water supply on, place one hand on the top, center of the gun and other hand on the back end of the gun.

IMPORTANT: Do NOT cover the orange cap on the back of the water gun.

2. Align the fill nozzle on the bottom of the gun with the Valve on the top of the Fill Station.
3. Press the water gun straight down to start filling the water gun (Fig 12).

NOTE: You will hear and see bubbles coming from the orange top cap on the gun. This is air escaping the tank as water is entering the tank.

4. Hold for about 6 seconds or until water sprays out of the orange cap (Fig 13). (You can also fill for only a few seconds to get back into the game faster. 3 seconds will result in about half a tank).

NOTE: Immediately after filling the gun, a small amount of water will fall out of the bottom fill port. This is just residual water left in the internal feed line.

NOTE: When 100% filled, a small amount of water may come from the orange top cap. This will stop as water is pumped from the gun and will not affect the performance of the water gun.



Fig. 12



Fig. 13

DISCONNECTING AND STORAGE OF FILL STATION AND WATER GUNS

IMPORTANT: Do NOT attempt to remove the hose prior to turning the water supply to the OFF position.

IMPORTANT: Do NOT attempt to remove the hose prior to releasing the water from the hose.

- 1) Turn the water supply to the OFF position.
- 2) Using an empty water gun, press down on the Orange Valve to release any water left in the hose.
- 3) Unscrew the hose from the hose connector by rotating the swivel end of the connector counter clockwise.

IMPORTANT: Attempting to disconnect the hose from the hose connector without releasing the water as noted in step 2 of this section may prove to be difficult.

- 4) Empty all water guns completely by tilting them forward toward the ground on a 45 degree angle and pumping the handle until all water is evacuated.
- 5) Store the water guns and Fill Station in a area that remains above freezing temperature.

TROUBLESHOOTING

Symptom: Water spraying out of the Fill Station when pushing water gun downward to fill.

Solution: Ensure the gun is level and is pressed straight down, all the way on the valve to fill properly.

Symptom: Water is spraying out of the Fill Station when water gun is removed.

Solution: Sometime the valve may become stuck, quickly press a water gun down and then pull up to realign the valve to shut the water off. This may need to be repeated in succession to align the valve but should not happen often. If water continues to spray out of the Orange Valve please do the following:

NOTE: Following steps show the Orange Valve separate from the Base Plate, it can remain in place/do not remove from Base Plate.

1. Turn the water source off
2. Use an empty gun, press down on the valve to release the water from inside the hose.
3. Unscrew the middle section of the Orange Valve (Fig 14).
4. Remove and flip the rubber washer
5. Hand tighten the two halves back together until snug, do not over tighten (Fig 15).



For further assistance, please contact Technical Support at (609) 212-0221.